



DAILY BRIEFING – to the 18th

BIKE / QUAD / SSV

DESCRIPTION OF SS2 (19th)

SS2 has basically the same characteristics as the previous day's SS, i.e. sandy terrain, with little rock although faster, with some winding areas between trees.

There is a service station about 3km away, on the road from Tolosa to Gáfete, but because GAS 1 is about 85km away, we allow assistance vehicles to access it about 300m from the start.

On the way to Gáfete from the SS, they should take the IP2 towards Castelo Branco and only exit at Tolosa, not Gáfete, so that they can pass the service station at the entrance to Gáfete.

The first 90km may be more winding, but with good road surfaces and sometimes very fast roads. At KM 85, very close to GAS1, the Baja & Hobby Promotion category, which has already covered these kilometres, will take a different route, so keep your eyes peeled and above all respect the instructions given by the organizers on site.

On the other hand, pay special attention to the public areas, there will be several along the route. Special attention should also be paid to stream crossings. The organizers will be on site to show you the best places to cross the streams.

From km 85 onwards, the route should be well “marked” on the ground and in some places a little damaged by passing cars. In the 20km or so before a divergence at km 247, where the cars go on the right and the motorcycles, quads and SSVs on the left, there is the possibility of overtaking an Auto vehicle that is very late. We will try to warn them of your hypothetical approach with alerts on the Stella III.

GAS zones:

It is difficult for an assistance vehicle to assist a fast competitor, the distance on asphalt between GAS 1 and GAS 2 and even between GAS 2 and GAS 3, is relatively short, the ideal will obviously be for one vehicle to do 1 and 3 and another vehicle to do 2. As you know, the GAS take place in 4-minute transfers (see below for a layout of the GAS zones).

Have a good race!

Km	IMPORTANTS POINTS – SS2
2,44	Spectator 4 (Gáfete)
15,81	Narrow area near the dam !!!
16,84	Spectator Area 5 (Monte da Pedra) Rádio 7
28,36	Spectator Area 6 (Tolosa) –

BAJAPORTALEGRE500.COM

ORGANIZAÇÃO



PATROCINADORES



APOIOS





38ª EDIÇÃO
BAJA PORTALEGRE 500 2024
 AUTOMÓVEL CLUB DE PORTUGAL



36,69	Fast area with barely visible rocks on the right side !!!
36,87	Spectator Area 7 (Comenda) – Rádio 8
45,91	Narrow footbridge over a railway with a step going up !!!
51,00	DZ 50
52,12	FZ 50
59,83	DZ 50
60,31	FZ 50
69,70	Rádio 9
87,62	DT / DZ 30 – GAS 1
88,54	FT / FZ 30
92,66	Spectator Area 2 (Domingão)
104,33	Rádio 1 – CC12
117,13	Passage over very narrow bridge with holes in the side !!!
117,35	Spectator Area 8 (Bemposta)
124,58	Tarmac crossing, CC15, with jump!!! Rádio 2 – CC15
131,87	Spectator Area 9 (Campo Militar de Santa Margarida)
140,71	DZ 50
141,40	FZ 50
146,80	Right-hand bend with a cliff on the right!!!
148,08	DZ 50
149,64	FZ 50
151,63	DT / DZ 30 – GAS 2
152,09	Rádio 3 – CC18
152,22	FT / FZ 30
160,18	Narrow footbridge over a railway with !!!
183,23	Rádio 4 – CC19
188,39	Left turn and after left turn “stump”, pull over to the right !!!
191,97	DZ 50
193,80	FZ 50
204,99	Bump with hoses on the left, slope to the right !!!
205,17	Spectator Area 2 (Domingão)
207,59	Leave PP, left barely visible and narrow at the fence !!!
208,24	DZ 50
208,36	Rádio 5 – CC21
208,59	FZ 50
209,20	DT / DZ 30 – GAS 3
209,84	FT / FZ 30

BAJAPORTALEGRE500.COM

ORGANIZAÇÃO



PATROCINADORES



APOIOS





212,73	DZ 50
213,49	FZ 50
224,87	Rádio 6 – CC24
237,64	DZ 50
238,49	FZ 50
250,75	DT / DZ 90
259,34	FT / FZ 90
276,27	DZ 50
278,02	FZ 50
279,80	Asphalt exit, narrow and winding !!!
279,99	Narrow footbridge over a railway with a step going up !!!
287,72	Final do SS2

TRANSFER ZONES

Transfer Zones:

There is a Transfer Zone on the SS2, in addition to the 3 GAS, of about 4km, to be covered in 13 minutes. The advertised time was obtained using an hourly average of 40km/h, which allows for a smooth ride without exaggeration. You must comply with the highway code and ride on the right-hand side of the road, complying with traffic signs, although the Police make it easier at crossroads, so pay attention to them. Only assistance from other riders is allowed on this route.

For reasons to do with the impossibility of crossing a river at km 241.86, we are forced to bring forward the Transfer Zone from km 250.75. Thus, the new Transfer starts at km 237.24, the distance will be 22 km and the time is 30 minutes.

The Stella III equipment, at the start of the Transfer, identified on the ground by the signs “TRANSFER 200M” and “TRANSFER IN”, in the latter they start counting down the time (the 13m), second by second, to the starting point, identified on site with a red starting flag, where in the last minute the numbers turn green, until they show the word GO, at which point they can restart the SS.

ROAD BOOK MODIFICATIONS

Notes:

- SS2 – km 157,80 – On the descent a succession of deep ruts crossing the road!!!
- From km 158,65 to km 160,18 – Potholes and ditches, pay extra attention!

Road Book changes will be provided by Bulletin

In addition to the changes to the Road Book regarding the new Transfer (mentioned above) and the GAS Transfer Zones, there are others, including two for the first 87km that reduce the distance from the start to GAS 1 by 3 km.

BAJAPORTALEGRE500.COM

ORGANIZAÇÃO



PATROCINADORES



APOIOS





The changes to the Road Book on paper (A5) will be provided to all competitors at the secretariat, together with the Road Book, from 08h00.

COMMERCIAL FILLING STATIONS

Stage 2 / Etapa 2	Km R.B	Location / Localização	Provider / Fornecedor	Fuel Available / Combustível Disponível
Section 2 / Secção 2	0	Nerpor / Service Park		
Refuelling Liaison	0,85	Portalegre	Intermarché	95 octane Petrol, standart Diesel
Refuelling Liaison	1,18	Portalegre	Galp, Cepsa, BP	All Fuel Available
Refuelling Liaison	35,35	Gáfete	JVC (BP)	Standart diesel, Premiun diesel, Petrol 95 standart
TC / CH 2	38,86	Gáfete		
Start SS2	0	Gáfete		
GAS 1	87,76	Ponte de Sor (Zona Industrial)		
GAS 2	151,63	Foros do Arrão		
GAS 3	209,2	Tramaga		
Arrival SS2	287,61	Coutadas / Portalegre		
Refuelling Liaison	4,8	Zona Industrial de Portalegre	Repsol	All Fuel Available
Refuelling Liaison	5,39	Zona Industrial de Portalegre	Prio	95 octane Petrol, standart Diesel
Arrival Stage 2	6,43	Nerpor		

ITINERARY

STAGE 2							Saturday, October 19	
Sunrise - 07:44							Sunset - 18:45	
TC	LOCATION	SS km	Liason km	Total km	Time	1st. Bike		
1D	START Section 2 / Stage 2 - NERPOR					08:25	Section 2	
Possible Refuelling (commercial filling stations indicated in the road book)								
2	TC Start SS2		38,86	38,86	01:15	09:40		
SS2		287,61				09:45		
2A	SS2 STOP (Max Time 6h30m)			287,61		13:45		
Possible Refuelling (commercial filling stations indicated in the road book)								
2B	ARRIVAL Stage 2 / Parc Fermé Nerpor		6,43	6,43	00:30 *	14:15		
Stage 2 totals		287,61	45,29	332,90				

BAJAPORTALEGRE500.COM

ORGANIZAÇÃO



PATROCINADORES



APOIOS

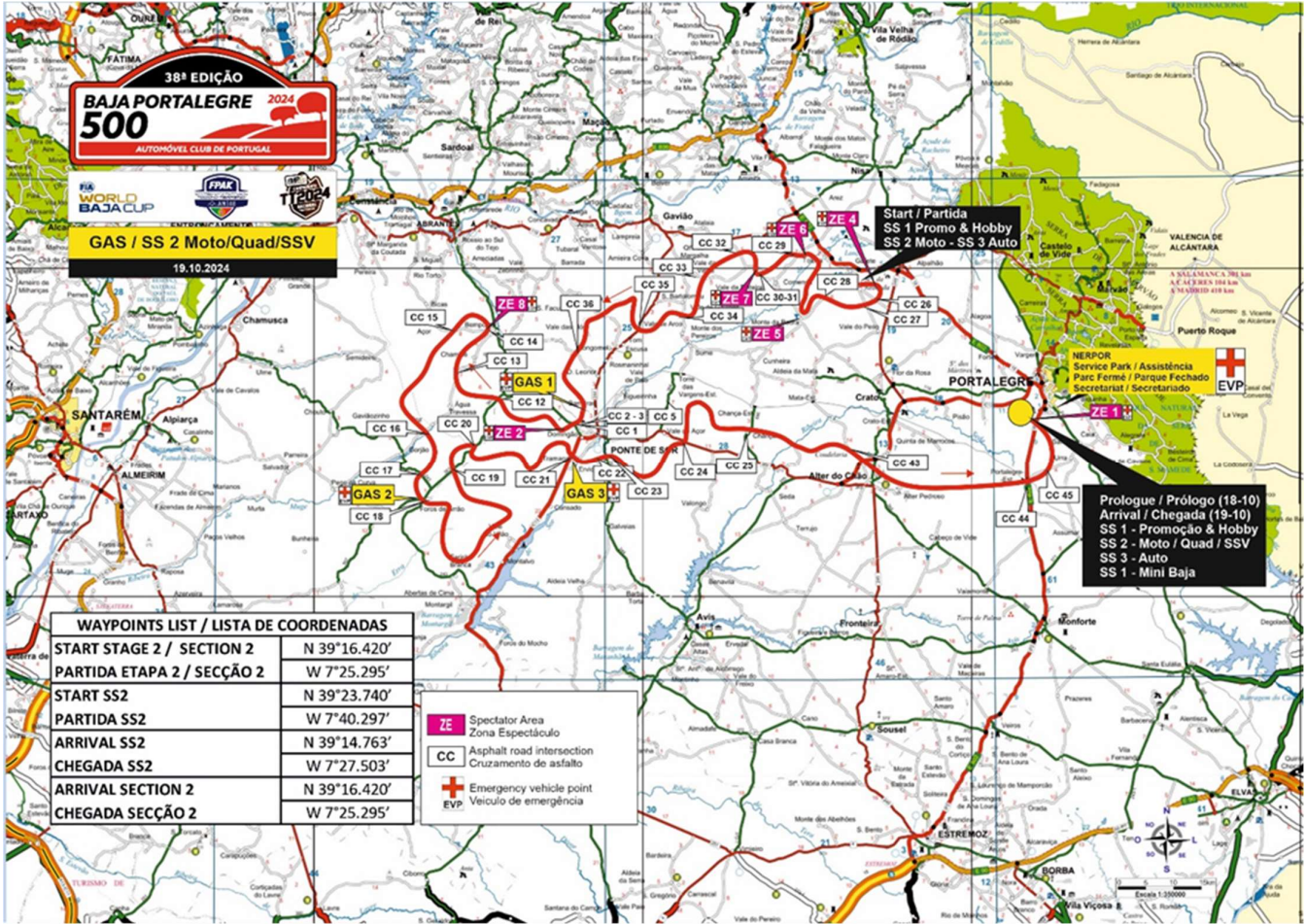




38ª EDIÇÃO
BAJA PORTALEGRE 2024
 AUTOMÓVEL CLUB DE PORTUGAL



SS2 MAP



BAJAPORTALEGRE500.COM

ORGANIZAÇÃO



PATROCINADORES



APOIOS





38ª EDIÇÃO
BAJA PORTALEGRE 2024
500
 AUTOMÓVEL CLUB DE PORTUGAL



BAJAPORTALEGRE500.COM

ORGANIZAÇÃO



PATROCINADORES

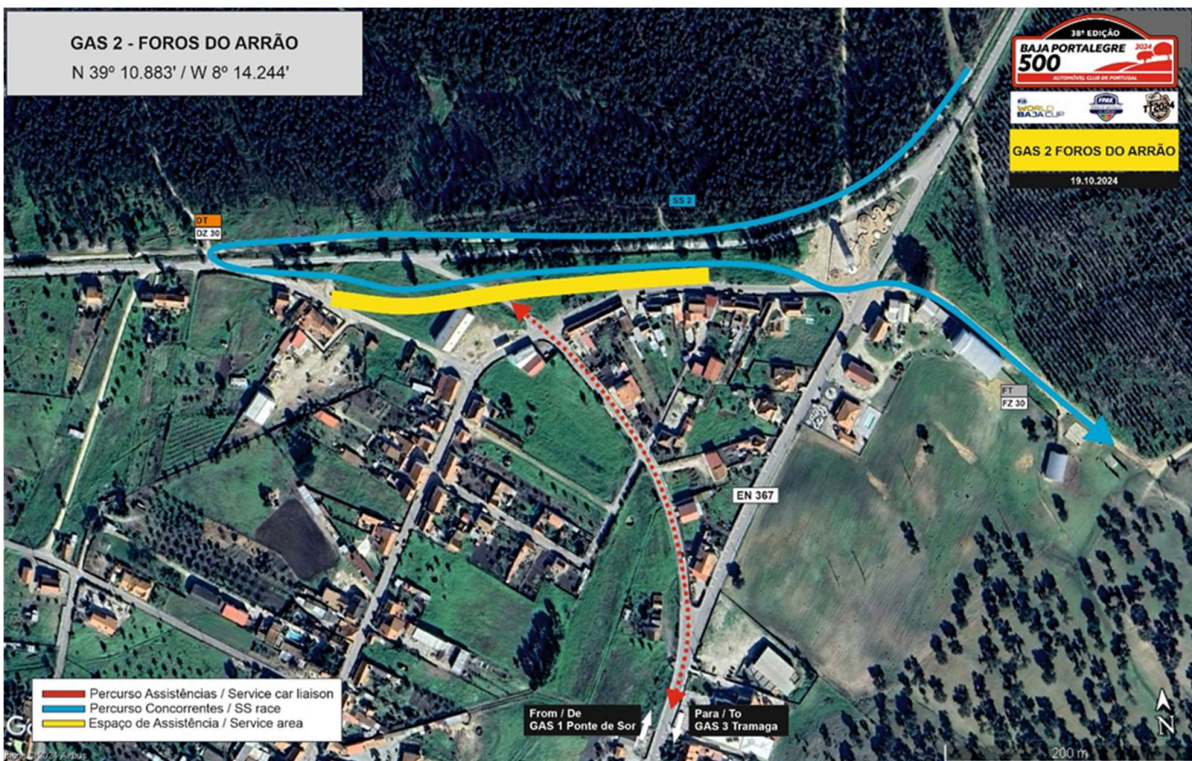


APOIOS





38ª EDIÇÃO
BAJA PORTALEGRE 500 2024
 AUTOMÓVEL CLUB DE PORTUGAL



BAJAPORTALEGRE500.COM

ORGANIZAÇÃO



PATROCINADORES



APOIOS





38ª EDIÇÃO
BAJA PORTALEGRE 2024
 500
 AUTOMÓVEL CLUB DE PORTUGAL



BAJAPORTALEGRE500.COM

ORGANIZAÇÃO



PATROCINADORES



APOIOS

